

# 3 Enjoy

## DVD recording

- For recording get a blank DVD+RW or DVD+R disc. Place in the tray with the label facing up and close the tray.  
**Tip** Switch the TV channel to the DVD Recorder/VCR viewing channel to see which TV programme you want to record
- Press **DOWN** or **UP** to scroll through the channels, or press the numeric buttons to select which channel you want to record
- Press **REC MODE** repeatedly to select a recording mode  
**Tip** For more information about recording modes, refer to the user manual
- Press **RECORD** to start recording  
**Tip** Press **RECORD** again to make a 10 minutes recording, each you press **RECORD** adds 10 minutes to the recording time
- To end recording press **STOP**. You will see 'Recording file information. Please wait...'
- Press **LIST/DISC MENU** to go to the disc menu and press **PLAY** on the title you just recorded to watch it



## Types of discs used on this recorder

Type	Record	Playback	Edit
DVD+RW	✓	✓	✓
DVD+R	✓	✓	✗
DVD+R DL	✗	✓	✗
DVD-RW	✗	✓	✗
DVD-R	✗	✓	✗
DVD VIDEO	✗	✓	✗
AUDIO CD	✗	✓	✗
VIDEO CD	✗	✓	✗
DATA CD	✗	✓	✗
DATA CD	✗	✓	✗

## Troubleshooting

For more troubleshooting tips, see the user manual.

Problem	Tip
Remote control does not work	Aim remote control at recorder (not at TV) and remove any obstacles between them.
Cannot record	Batteries are weak, replace the batteries.
	Channel you are recording is not stored or the wrong program number is selected.
	The recorder cannot duplicate copyrighted material onto a recordable DVD or VHS.
	A finalised DVD+R or a videocassette its recording tab removed has been inserted.

## Need help?

### User Manual

See the user manual that came with your DVD recorder/VCR

### Online

Go to [www.philips.com/support](http://www.philips.com/support)

### Hotline

call 1-888-PHILIPS (1-888-744-5477) for our operators



2005 © Koninklijke Philips N.V.  
All rights reserved.  
[www.philips.com](http://www.philips.com)

DVD Recorder/VCR

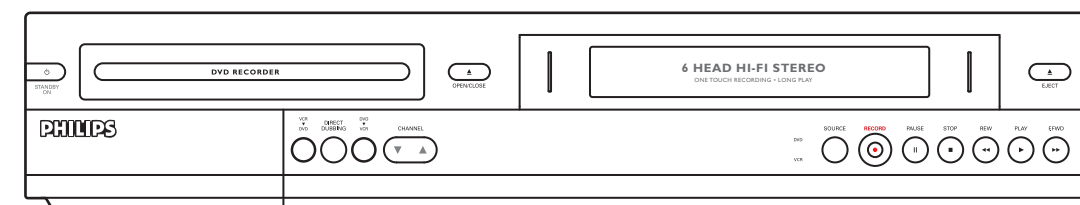
DVDR 3320V

# Quick Start Guide

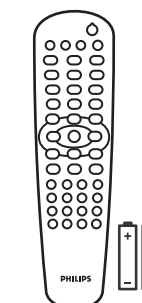


- 1 Connect
- 2 Setup
- 3 Enjoy

## What's in the Box



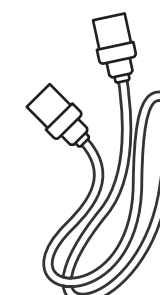
DVD recorder/VCR



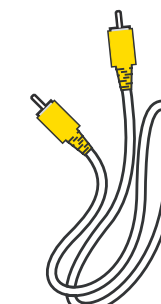
Remote control and 2 batteries



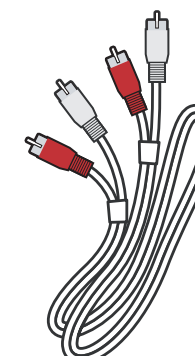
Quick start guide



RF coaxial cable



Video cable



Audio cable



User manual

# PHILIPS

# 1 Connect

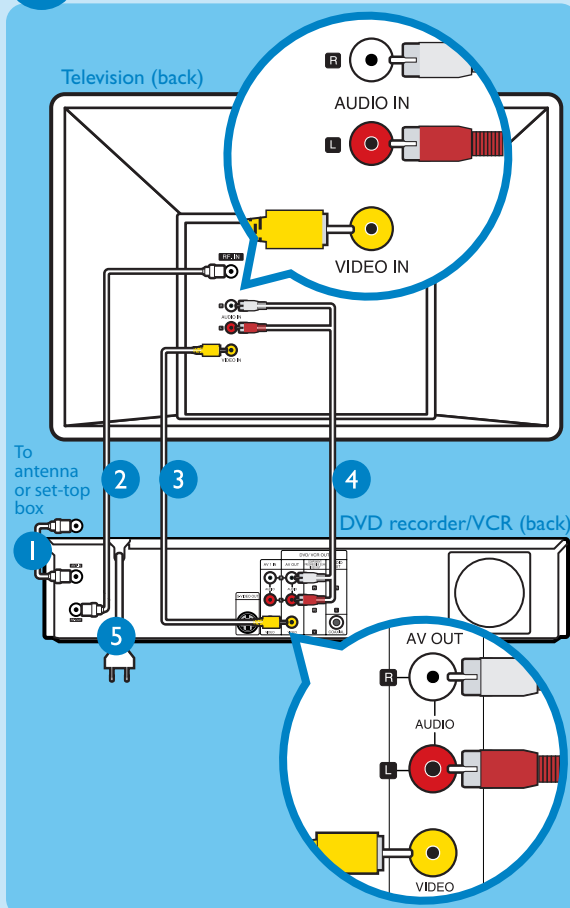
To connect to your television, follow the instructions under 'Connection to your TV'. If you have an existing AV amplifier, follow the instructions under 'Connection to an amplifier' instead.

## Connection to your TV

### A Before connecting

Your TV should be connected to the cable box/set-top box, satellite receiver or antenna, unplug the antenna cable from the TV

### B Connecting



- 1 Connect the antenna cable (plugged out from the TV) to ANT-IN jack at the rear of the DVD recorder/VCR
- 2 Connect the provided antenna cable to the RF OUT jack on the rear of the recorder and into the VHF/UHF/RF IN jack of the TV
- 3 Connect the yellow video cable to the yellow VIDEO IN jack of the TV and to the yellow AV OUT video jack at rear the DVD recorder/VCR
- 4 Connect the red and white audio cable to the respective red and white audio jack of the TV and to the respective red and white AV OUT audio jack at rear the DVD recorder/VCR
- 5 Plug in the power cable from the recorder to an AC power outlet

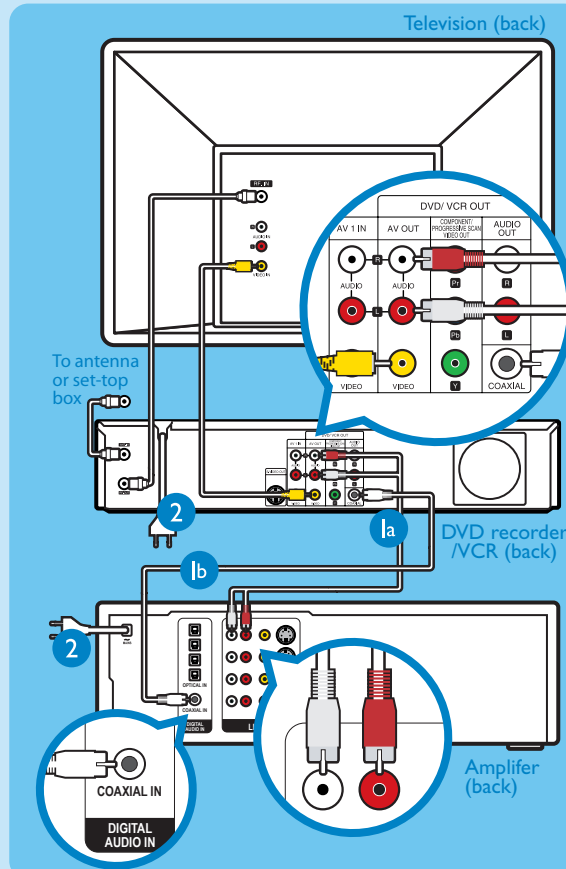
## Connection to an amplifier

### A Before connecting

Unplug all connections to the AV amplifier and unplug the antenna cable from the TV, below are details for 2 ways to connect your new DVD Recorder/VCR to the AV amplifier

### B Connecting

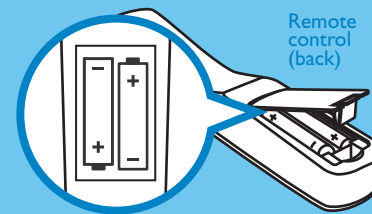
Follow step 1 to 3 under 'Connection to your TV' before following the instructions below



- 1a Use the red and white audio cable (not supplied) to connect the respective red and white AV OUT audio jack on the rear of the recorder to their respective colour audio jacks of the LINE IN or AUDIO IN portion on the rear of the amplifier  
OR
  - 1b Use the coaxial cable (not supplied) to connect the coaxial jack at the audio out portion on the rear of the recorder to the coaxial jack of the LINE IN or AUDIO IN portion on the rear of the amplifier
- 2 Connect the power cables from the VCR/DVD recorder and amplifier to AC power outlets

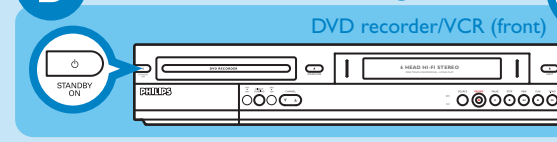
# 2 Setup

## A Inserting batteries



Note where the positive and negative ends go

## B Find correct viewing channel



- 1 Press **STANDBY-ON**
- 2 Press **SYSTEM MENU** on the recorder's remote control
- 3 Switch on TV
- 4 Press '0' on the TV's remote control, then repeatedly press the Channel Down button until you see the System Menu. This is the correct viewing channel for the home theatre system

**Tip** In some TVs, to find the correct viewing channel, you can keep pressing the AV or the SELECT buttons. If still unable to find the correct viewing channel, check the connections again or check your TV's user manual



## C Conduct Installation

- 1 In system menu, press **RIGHT** to select Auto Programming in General option menu

**Tip** Use the recorder's remote control to make your selections

- 2 Press **RIGHT** to select Start
- 3 Press **OK** to activate channel search

**Tip** If no channels were found, check your antenna connection then see the user manual to start channel search again



- 4 Check the options for Clock Set, TV Aspect, VCR Play Aspect and VCR Play System to make sure they are correct for your TV

**Tip** If incorrect, use the arrow buttons to correct them

- 5 Press **SYSTEM MENU** when finished



## VHS playback

- 1 Press **VCR** on remote control
- 2 Insert videocassette into the cassette slot
- 3 Press **PLAY** if playback does not start automatically
- 4 To stop, press **STOP**
- 5 Press **OPEN/CLOSE** to eject the cassette

## VHS recording

- 1 Insert videocassette with the record tab still intact into cassette slot
  - 2 Press **DOWN** or **UP** to scroll the channels, or use 0 to 9 to select the TV program you want to record
  - 3 Press **REC MODE** repeatedly to select a recording mode
  - 4 Press **RECORD** to start recording
- Tip** Press **RECORD** again to automatically record 30 minutes, every time you press **RECORD** adds 30 minutes recording time

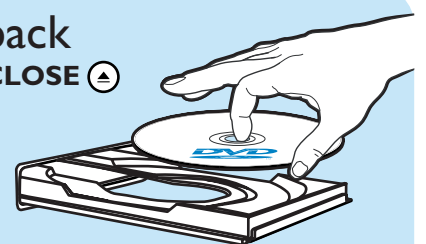
- 5 Press **PAUSE** to pause and **RECORD** again to resume recording

**Tip** Pause will switch to stop after 5 minutes

- 6 To stop, press **STOP**

## DVD playback

- 1 Press **OPEN/CLOSE**



- 2 Get a DVD disc and place in the tray with the label facing up
- 3 Press **OPEN/CLOSE**
- 4 Press **PLAY** if playback does not start
- 5 Press **DOWN** or **UP** to scroll through the list of options in the DVD menu
- 6 Press **PLAY** on the option you want
- 7 To stop, press **STOP**
- 8 Press **LIST/DISC MENU** to return to DVD menu